



AUSTRALIAN LOCAL  
GOVERNMENT ASSOCIATION

# NATIONAL LOCAL ROADS AND TRANSPORT CONGRESS 2016

*Local Infrastructure – Developing Regions*

TOOWOOMBA QLD  
9-11 NOVEMBER 2016

CONGRESS  
HANDBOOK



# NATIONAL LOCAL ROADS AND TRANSPORT CONGRESS 2016

## Local Infrastructure – Developing Regions

TOOWOOMBA QLD  
9-11 NOVEMBER 2016



### MAJOR SPONSORS



Australian Government  
Department of Infrastructure and Regional Development



<b>CONTENTS</b>	3	Mayor's welcome	10	Social functions
	5	Congress program	10	Partner tours
	7	Keynote speakers	11	Congress exhibitors
	8	General information		

## MAYOR'S WELCOME

On behalf of my Council colleagues and the Toowoomba Region community, I welcome you to Toowoomba for the 2016 National Local Roads and Transport Congress.

The Toowoomba Region is an area steeped in tradition and bold with ambition. New opportunities in agriculture are emerging and the Toowoomba region is also being buoyed by its proximity to the Surat Basin, one of Australia's richest accessible resource reserves. With the broader regional population now over 160,000, these unprecedented opportunities are set to change the face of the Garden City.

The advent of a jet-capable, privately-funded airport on the outskirts of the city has created a sense of expectation for locals and investors alike. Connectivity, previously out of reach for our vibrant city, is changing the economic and social landscape of the region. Expected to be catering for up to 1.36 million passengers within five years, early estimates point toward a contribution of more than \$225 million to Gross Regional Product over the same period.

Construction is underway on the Toowoomba Second Range Crossing, a bypass route north of Toowoomba, and at a cost of \$1.6 billion the project is set to further cement Toowoomba's vision of becoming a nationally recognised inter-modal transport hub.

The Federal Government's continuing commitment to the Melbourne to Brisbane Inland Rail Project is also creating excitement in the region. Toowoomba Regional Council has advocated for our place on this rail link and our potential has been

recognised. Indeed, a group of local investors are developing an intermodal terminal and industrial precinct in readiness for the extra connectivity this direct access to the Port of Brisbane and South to Melbourne will bring.

The massive potential for increased export of fresh local meat and produce from the Darling Downs and Lockyer Valley into Asia is being rigorously explored. Boasting a reputation as Queensland's top agricultural region, the Toowoomba Regional Council area generated an output of \$1.46 billion in agricultural production during 2014-15.

Our independent economic development organisation, the Toowoomba and Surat Basin Enterprise, is taking the lead in developing relationships with Asian markets, particularly China, where demand for food is strongly growing, driven by Asia's high growth economies, growing personal incomes, demand for safe foods, and the impact of tight food supplies. Recently I joined 200 delegates from our business community on the first international passenger flight to leave Brisbane West Wellcamp Airport bound for China, it was a remarkable experience as we learnt about the raft of opportunities that exist in that market.

This infrastructure boost is building further confidence in a region already well known for its diverse and stable economy. Taking into account the airport and the bypass, the current total development spend in the Toowoomba region is more than \$11 billion including other transport network upgrades, development of industrial accommodation, mining investments and a major shopping complex redevelopment in the centre of the city.

Further, we expect other industries like agriculture, logistics, aviation, and corporate services to grow and prosper and Council continues to look for new ways to expand business links both nationally and internationally.

While we work to harness and nurture economic development, Council also recognises very clearly that this growth needs to complement the quality of life we are well-known for here in the Toowoomba region.

Our relaxed lifestyle, rich agricultural heritage, close-knit communities and beautiful natural experience have long been a feature, and we are committed to preserving what makes us unique for future generations.

Council is keen to continue working with the ALGA to advocate for funding for local roads and bridges to meet the needs of local communities across Australia. For our road networks to thrive, all three levels of government must remain committed to working collaboratively on transport planning. I trust that the congress will deliver all delegates much food for thought.

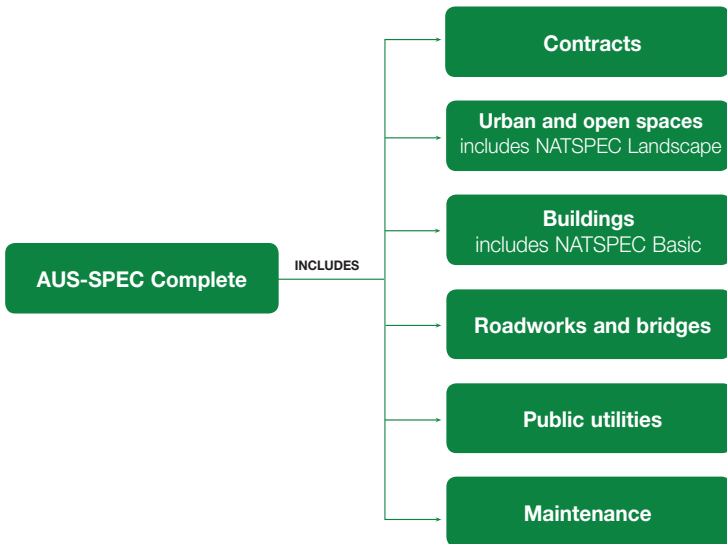
We are proud of our region and I hope you enjoy all we have to offer!



**Mayor Paul Antonio**

TOOWOOMBA  
REGIONAL  
COUNCIL





Robert Fuller  
CEO. IPWEA Australasia

“IPWEA is renowned for its best practice, industry leading publications and training. It’s our solutions management that is valued so highly by Councils, Government and the private sector.

AUS-SPEC was developed by IPWEA Australasia to provide nationally consistent civil specifications for councils – instead of them reinventing the wheel.

AUS-SPEC provides a library of civil design, construction and maintenance templates and allows the flexibility to edit and add Council specific and project specific information. It means that everyone in design, construction and maintenance of Council assets are using the same language.

If you’re not using AUS-SPEC – you’re digging yourself into a bigger hole”



**IPWEA**

INSTITUTE OF PUBLIC WORKS  
ENGINEERING AUSTRALASIA



For more information visit [www.natspec.com.au](http://www.natspec.com.au)

TOOWOOMBA QLD  
9-11 NOVEMBER 2016

CONGRESS PROGRAM PROUDLY SUPPORTED BY

CONGRESS  
PROGRAM

WEDNESDAY 9 NOVEMBER 2016	
10.15am	REGISTRATION
10.45am	<b>Toowoomba Tour</b> Brisbane West Wellcamp Airport, Toowoomba Second Range Crossing and Toowoomba Enterprise Hub
12.45pm	<b>Heavy Vehicle Demonstration Transfer</b> <i>A Coach will collect guests just attending the afternoon session from the Empire Theatre at 12.45pm</i>
1.00pm	LUNCH
1.00pm	<b>Heavy Vehicle Manoeuvring Demonstration</b>
4.00pm	<i>Transfers back to hotels</i>
4.45pm	<i>Transfers to Cobb+Co</i>
5.00pm	<b>WELCOME RECEPTION</b> Cobb and Co Museum

THURSDAY 10 NOVEMBER 2016	
9.00 am	<b>OPENING ADDRESS</b> ALGA President
9.20 am	<b>KEYNOTE ADDRESS</b> <b>Martin Matthews</b> , Former Ministry of Transport Chief Executive, New Zealand
10.00 am	<b>CSIRO's Transport Network Strategic Investment Tool (TraNSIT)</b> <b>Dr Andrew Higgins</b> , Principal Research Scientist, CSIRO
10.30 am	MORNING TEA
11.00 am	<b>Partnerships for Improved Infrastructure – Regional Road Planning Initiatives</b>
12.30 pm	LUNCH
1.30 pm	<b>PANEL</b> <b>Partnerships for Improved Infrastructure</b> <b>Jeremy Parkinson</b> , Infrastructure Australia <b>Sal Petrocetto</b> , National Heavy Vehicle Regulator <b>Dr Andrew Higgins</b> , Principal Research Scientist, CSIRO <b>Nicole Spencer</b> , Department of Infrastructure and Transport
3.00 pm	AFTERNOON TEA



3.30pm	<b>National Infrastructure Investment</b> <b>Richard Wood</b> , Inland Rail
4.00 pm	<b>WORKSHOP</b> <b>How Prepared is your Council to Engage in Regional Road Planning?</b>
5.00 pm	DAY ONE CLOSE
6.30 pm	<b>OFFICIAL DINNER</b> Picnic Point

FRIDAY 11 NOVEMBER 2016	
9.00 am	<b>GOVERNMENT ADDRESS</b> Minister for Infrastructure and Transport, <b>The Hon Darren Chester MP</b>
9.30am	<b>Austrroads Road Safety</b> <b>David Bobberman</b> , Austrroads
10.00am	<b>OPPOSITION ADDRESS</b> Shadow Minister for Infrastructure, Transport, Cities and Regional Development, <b>the Hon Anthony Albanese MP</b>
10.30 am	MORNING TEA
11.00 am	<b>Austrroads Data Harmonisation</b> <b>Angus Draheim</b> , Austrroads
11.30 am	<b>PANEL SESSION</b> <b>National Supply Chain Strategy</b>
12.30 pm	<b>The Local Government Transport Agenda and Congress Bulletin Launch</b>
1.00 pm	CLOSE

THURSDAY MEAL BREAKS PROUDLY SUPPORTED BY

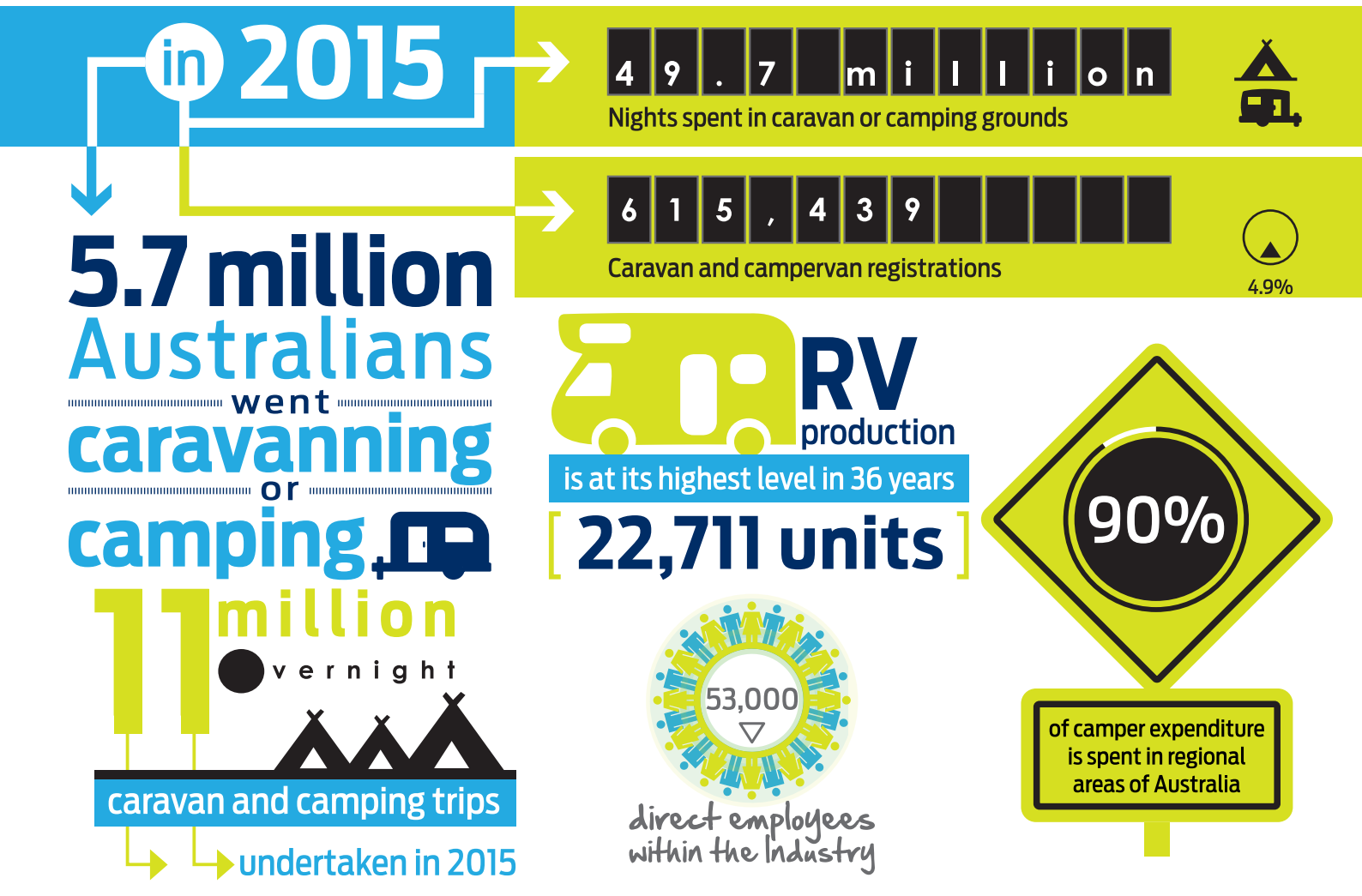


CONGRESS DINNER PROUDLY SUPPORTED BY





Caravan Industry Association of Australia vision is “To lead and champion a robust, compliant and sustainable caravanning and camping industry in Australia”.



[www.caravanindustry.com.au](http://www.caravanindustry.com.au) P 03 9815 2015



Supporting Local Government to build stronger and more prosperous local communities

## KEYNOTE SPEAKERS



### Martin Matthews

Martin Matthews recently stepped down from his position as Secretary for Transport in New Zealand after nearly eight years in the role. In that capacity he was Chief Executive of the Ministry of Transport and responsible for advice to the government on policy, regulation and investment across all modes of transport.

During his term as Secretary, Martin led the Ministry in taking a more strategic long term view about the future of mobility and transport, and the role that technology will play in bringing about a paradigm shift in the coming decades. This leadership was recognised in 2015 when he was inducted as one of only three people in the ITS World Congress Hall of Fame.

Prior to his transport role, Martin held leadership positions as Chief Executive of the New Zealand Ministry for Culture and Heritage and as an Assistant Auditor-General. Martin is a qualified accountant and economist and is now working as an independent consultant.

### The Hon Darren Chester MP

#### Minister for Infrastructure and Transport

Darren Chester was elected to Federal Parliament as the Member for Gippsland on June 26, 2008, in a by-election following the retirement of the Hon Peter McGauran.

Darren was re-elected in 2010 and served as the Opposition's Shadow Parliamentary Secretary for Roads and Regional Transport, as well as being an active member of various Parliamentary Committees until the most recent Federal election.

Following a successful campaign in 2013 and the introduction of the Abbott-Truss Government, he was appointed the Parliamentary Secretary to the Minister for Defence.

Darren continued as the Assistant Minister for Defence under the new Turnbull Government and in February 2016, was appointed to Cabinet as the Federal Minister for Infrastructure and Transport.

Prior to entering Federal Parliament, he worked as a newspaper and television journalist throughout Gippsland and then became Chief of Staff to the Leader of The Nationals in Victoria, Peter Ryan.

Darren is a former Chief Executive Officer of regional lobby group Champions of the Bush and served two terms as President of the Lakes Entrance Business Tourism Association (LEBTA), where he was heavily involved in tourism marketing and organising major events.

Darren has led various community campaigns and has been actively involved in projects to improve the environment of the world-renowned Gippsland Lakes.

### The Hon Anthony Albanese MP

#### Shadow Minister for Infrastructure, Transport, Cities and Regional Development

Anthony Albanese grew up in a public housing community in Camperdown and recognised early on the need to fight for social justice, so that there was equal opportunity in society.

That is what led Anthony to joining the Australian Labor Party. He developed his political activity working for former prisoner of war and legendary Whitlam and Hawke Government Minister Tom Uren.

In 1996 Anthony was elected as the Member for Grayndler in Sydney's inner west, where he has lived his entire life.

Following the election of the Federal Labor Government in November 2007, Anthony became the Minister for Infrastructure and Transport and Leader of the House of Representatives.

Anthony was named Infrastructure Minister of the Year for 2012 by London based publication Infrastructure Investor. In June 2013, he became Deputy Prime Minister, and also took on additional responsibility as Minister for Broadband, Communications and the Digital Economy. Anthony was re-elected the Member for Grayndler in 2013 and is now the Shadow Minister for Transport and Infrastructure, and the Shadow Minister for Tourism.



## GENERAL INFORMATION



### Accommodation contact details

#### **TOOWOOMBA CENTRAL**

07 4688 3333  
532-544 Ruthven Street

#### **BURKE AND WILLS HOTEL**

07 4632 2433  
554 Ruthven Street

#### **LAGUNA SERVICED APARTMENTS**

07 4659 9188  
189 Hume Street

#### **QUEST TOOWOOMBA**

07 4690 2222  
133 Margaret Street

### Bus transfers

Bus transfers have been arranged for delegates from the Congress hotels to the various Congress venues and back. Please refer below for a timetable.

#### **WELCOME RECEPTION, COBB+CO MUSEUM**

##### **Wednesday 9 November 2016**

Coaches will depart from all Congress hotels at 4.45pm and return at 6.30pm.

#### **CONGRESS DINNER, PICNIC POINT**

##### **Thursday 10 November 2016**

Coaches will depart from all Congress hotels at 6.45pm and return shuttles will operate from 10.15pm.

#### **AIRPORT TRANSFERS**

##### **Friday 11 November 2016**

Coaches will depart at 1.45pm from Empire Theatre to Brisbane airport.

### Congress venue and location

#### **EMPIRE THEATRE, TOOWOOMBA**

Toowoomba is in the Darling Downs region, located 125km west of Brisbane and is Queensland's largest inland city. Toowoomba is known as the Garden City with more than 150 public parks and gardens. Each year Toowoomba hosts the Carnival of Flowers in September and national championship events for the sports of mountain biking and motocross.

The 2016 National Local Roads and Transport Congress will be held at the Empire Theatre, the heritage listed, largest regional theatre in Australia. Empire Theatre's main stage and auditorium holds seating for over 1,500 people.

### Congress website

For Congress updates please check the Congress website at [www.alga.asn.au](http://www.alga.asn.au)



# Toowoomba



## Delegate list

A delegate list with name, organisation and state will be supplied to all delegates at the Congress. Anyone who did not select the box releasing their information will not be included.

## Dress code

**Business sessions** . . . smart casual

**Welcome reception** . . . smart casual

**Dinner** . . . . . smart casual

## Evaluation survey

An online evaluation survey will be emailed to all delegates after the Congress. Delegates are encouraged to complete the Congress evaluation as it assists us to plan future Congresses.

## Insurance

Registration fees do not include personal travel insurance of any kind. It is strongly recommended that, when registering for the Congress and booking travel, a travel insurance policy is taken out to cover loss, cancellation, medical cover etc. for any reason. The Congress committee and secretariat do not take responsibility for any delegate failing to insure.

## Luggage

A dedicated spot for luggage will be available on Friday 11 November. Please note no responsibility will be taken for items left in the storage area. This space will only be available until the close of the last Congress session.

## Mobile phones

As a courtesy to other delegates and speakers, please ensure that all mobile phones are turned off or in 'silent' mode during all sessions and social functions.

## Name badges

Your name badge must be worn at all times, as it is your entry to all sessions and social functions.

## Parking

Parking for Empire Theatre, including wheelchair accessible parking, is available on Neil Street. There is also parking available on the corner of Julia and Hume Streets.

Parking after 5.00pm Monday to Friday, after 11.30am on Saturday and all day Sunday is free of charge.

Parking fees are \$1.70 per hour to a maximum of \$8.00 per day.

## Registration desk

The registration desk will be located in the Empire Church and will remain open for the duration of the Congress. The registration desk will act as your point of contact throughout the Congress. If you have any queries or special requirements, please do not hesitate to ask.

## Registration desk opening hours

**Wednesday, 9 November**  
2.00pm-4.00pm

**Thursday, 10 November**  
8.00am-5.00pm

**Friday, 11 November**  
8.00am-1.30pm

## Taxis

**Australia Wide Taxi**  
131 008



## SOCIAL FUNCTIONS

### Welcome reception

WEDNESDAY 9 NOVEMBER  
**5.00pm–7.00pm**

Inclusive in registration fees

VENUE Cobb+Co Museum

DRESS Smart Casual

This is your opportunity to catch up with fellow Congress delegates and ALGA staff over some light refreshments.

Extra tickets for accompanying persons/partners can be purchased at \$50 per ticket.

### Congress dinner

THURSDAY 10 NOVEMBER  
**6.30pm–10.30pm**

Inclusive in registration fees

VENUE Picnic Point, Toowoomba

DRESS Smart Casual

The annual Congress conference dinner is a fantastic opportunity to relax and network with your friends and colleagues.

Extra tickets for accompanying persons/partners can be purchased at \$95 per ticket.

CONGRESS DINNER  
PROUDLY SUPPORTED BY



## PARTNER TOURS

### TOUR 1



### Gardens and Township Tour

THURSDAY 10 NOVEMBER  
**Depart from Empire Church at 10.30am  
(Congress Registration Desk)**

\$70 per person

DRESS Smart Casual

For today's tour we will visit some beautiful gardens and the Regional Art Gallery.

### TOUR 2



### Wine and Chocolate Tour

FRIDAY 11 NOVEMBER  
**Depart from Empire Church at 9.00am  
(Congress Registration Desk)**

\$70 per person

DRESS Smart Casual

Today we will visit the Chocolate Cottage and Bunnyconnellen olive grove and vineyard.

## CONGRESS EXHIBITORS



### Downer Group

Level 2, 650 Lorimer Street  
Port Melbourne VIC 3207

PHONE 1800 369 637

EMAIL [info@downergroup.com](mailto:info@downergroup.com)

WEB [www.downergroup.com](http://www.downergroup.com)

CONTACT Ross Ioakim

Downer is one of the largest providers of engineering services for critical infrastructure. With 7,000+ employees, its scale provides a strong platform for growth and delivering integrated asset solutions and services.

For customers undertaking capital infrastructure projects or maintaining critical assets, Downer has the ability to deliver a wide range of services needed for project success, across civil, structural, mechanical, electrical and instrumentation, roads, camps, civil works, water treatment, communications and power.

Zero Harm is at the heart of understanding who we are and what we do. It defines Downer's operations and fosters health, safety, sustainability, community and environmental excellence.



### National Heavy Vehicle Regulator

Gasworks Plaza, Level 3, 76 Skyring  
Terrace, Newstead QLD 4006

PO Box 492, Fortitude Valley QLD 4006

PHONE 1300 MYNHVR (1300 696 487)

FAX 07 3309 8777

EMAIL [accessconnect@nhvr.gov.au](mailto:accessconnect@nhvr.gov.au)

WEB [www.nhvr.gov.au](http://www.nhvr.gov.au)

CONTACT Todd Wellard

The National Heavy Vehicle Regulator (NHVR) is Australia's dedicated regulator for all vehicles over 4.5 tonnes gross mass.

As an independent regulator under the Heavy Vehicle National Law (HVNL), the NHVR provides regulatory leadership and drives sustainable improvements to safety, productivity and efficiency outcomes across the heavy vehicle transport sector and the Australian economy.

The NHVR works with industry and partner agencies to build a safe, productive and innovative heavy vehicle industry. We aim to minimise the compliance burden on industry, reduce duplication and inconsistencies across state and territory borders and boost road safety.



### Toowoomba Regional Council

PO Box 3021  
Toowoomba QLD 4350

PHONE 131 TRC (131872)

FAX 07 3309 8777

EMAIL [info@tr.qld.gov.au](mailto:info@tr.qld.gov.au)

WEB [www.tr.qld.gov.au](http://www.tr.qld.gov.au)

Welcome to the Toowoomba Region, a region rich with tradition and bold with ambition. Offering residents the very best of city and country living, our region is recognised as one of Australia's most diverse and stable economies, with robust commercial and industrial enterprises.

Home to around 30,000 businesses, Toowoomba is also the gateway to Queensland's resource-rich Surat Basin, and this, coupled with our strong economic indicators cement the region as a competitive, diverse economy base.

Recent infrastructure injection into our Region includes a new jet-capable airport, the commencement of construction of the Toowoomba Second Range Crossing and our place on the proposed Melbourne to Brisbane inland rail corridor, will open remarkable opportunity for the region to become a leading intermodal transport hub for Eastern Australia.

Our future is bright and there has never been a better time to live, visit or invest in the Toowoomba Region, Queensland's most family friendly community!



NATIONAL  
LOCAL ROADS  
AND TRANSPORT  
CONGRESS 2016

*Local Infrastructure  
– Developing Regions*

TOOWOOMBA QLD  
9-11 NOVEMBER 2016

McArthur

Best People Fit