



Australian Government
Department of Climate Change
and Energy Efficiency

National General Assembly of Local Government 2011

LOCAL GOVERNMENT: WORKING AT THE POINTY END

Harinder Sidhu

First Assistant Secretary

Adaptation, Science and Communication Division



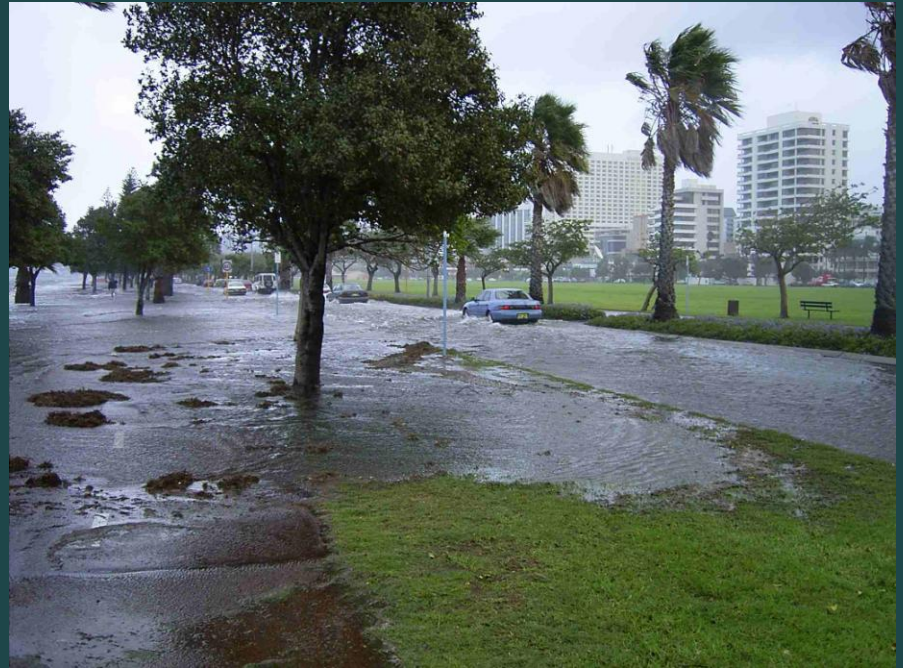
thinkchange

www.climatechange.gov.au

Overview

- Climate science and climate extremes
- Impacts
- Action on climate change at the local level
- National challenge and Australian Government action

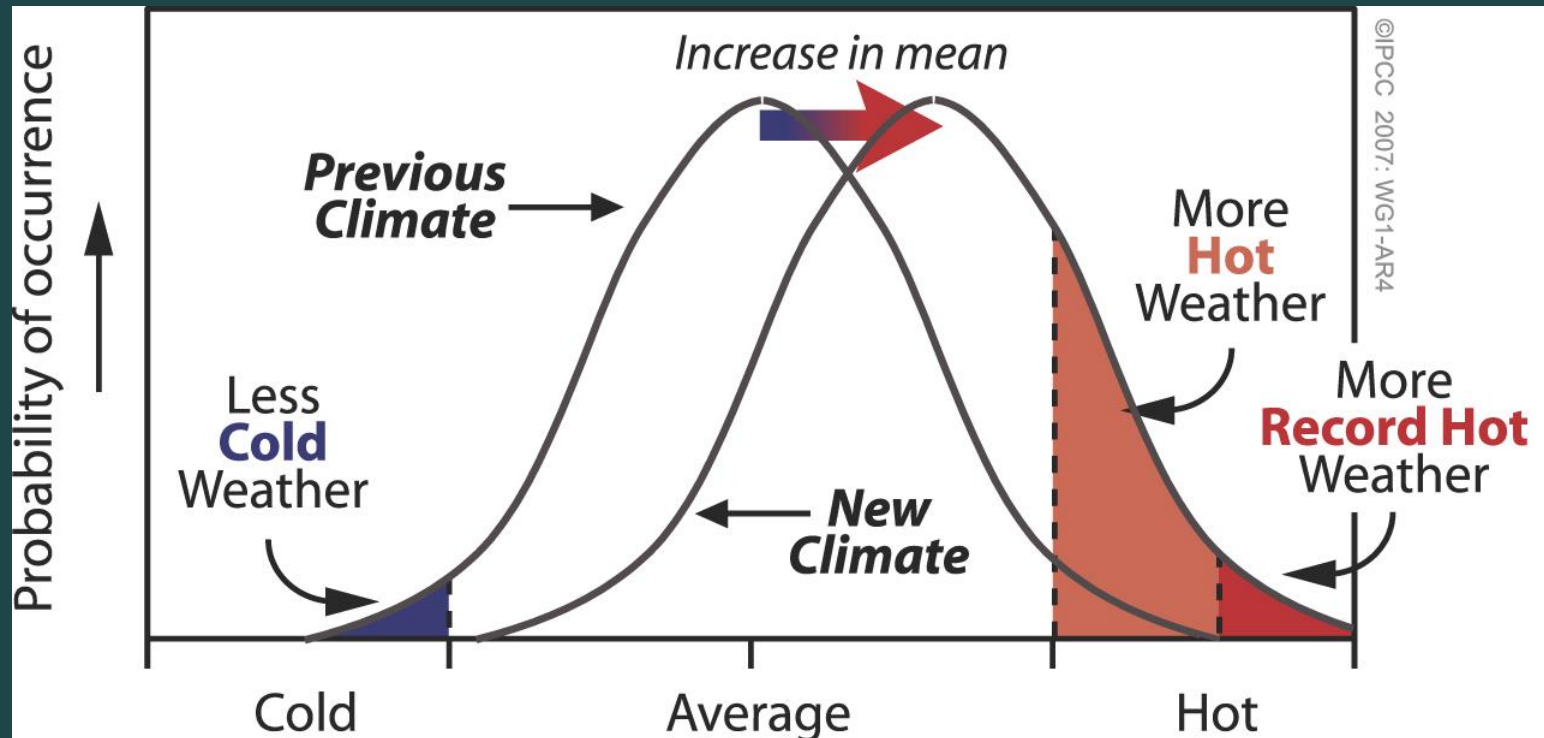




thinkchange

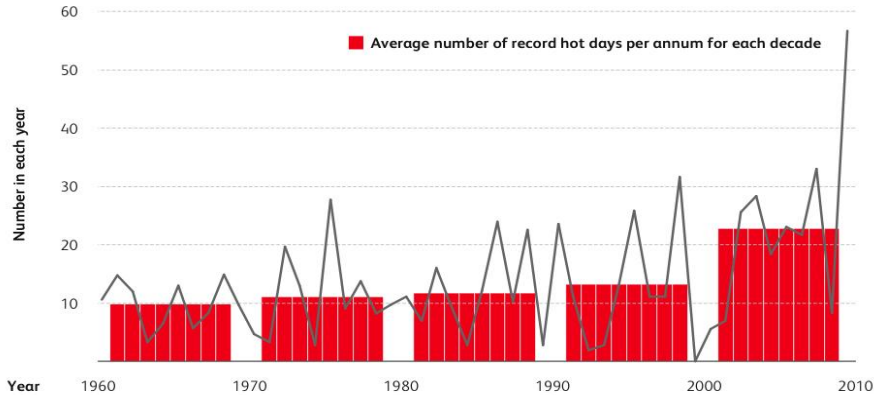
www.climatechange.gov.au

Changes in averages and extremes



Heat waves: health & infrastructure

Number of record hot day maximums at Australian climate reference stations



Source: Bureau of Meteorology

January 2009 - Southern cities

Costs: >400 premature deaths; losses ca. \$800 M or more

Disruption to transport and power supplies; shutdown of Basslink connector

Frequency of heat waves expected to double by 2030; triple by 2070

BoM 2010; Stafford Smith 2009



Impacts of extreme rain events

- Unexpected high-intensity rain and other weather affects transport, energy and mining infrastructure
- Intensities expected to increase in many areas



Ensham Mine, Queensland, 2008

- Production stopped for over a year
- \$millions in damage and costs



Yallourn, Victoria, 2007:

- Excessive rainfall caused a massive landslide and flooding
- Caused serious power supply issues for Victoria



Pilbara, WA, 2006, 2009:

- Cyclones in 2006 and excessive rain in 2009 closed the iron ore mines

Climate Change Impacts: Summary

- Impacts are occurring now, with significant social, environmental and economic consequences.
- Most of Australia's settlements and critical infrastructure will be increasingly exposed to climate hazards.
- Costs for maintenance, repair and asset replacement will increase insurance costs will increase. In some instances, insurance may not be available.
- Climate change may significantly alter financing arrangements for development.

Local Government and Climate Change : mitigation

The World's First Solar Electric Bus

The Adelaide City Council has raised the standard in international sustainability with the introduction of the world's first solar-powered electric bus that is recharged using 100% solar energy. The bus named Tindo, the Kaurana Aboriginal word for 'sun' is the newest addition to the Adelaide City Council's Adelaide Connector Bus service, a free service for the people of Adelaide.



thinkchange

www.climatechange.gov.au

Local government and adaptation

Gold coast and sand Replenishment

Programs for sand replenishment are part of Gold Coast Council's strategy for reducing storm surge erosion and protecting development in The short- to medium-term



thinkchange

www.climatechange.gov.au

City of Mandurah

Councillor Paddi Creevey – Mayor, City of Mandurah WA:

It's very important that Local Governments take early action on climate change, and the City of Mandurah certainly has a strong belief that this is critical to our future. When we're looking at adaptation plans, it's not just about sea level rise. It's about how is the community going to live healthily, how is the environment going to be protected, and how are we able to manage those public health risks that will increase with rising temperature and sea level rises that we need to continue doing all we can to protect the environment. We also have built the Mandurah sustainable home so that people can really take charge themselves of doing things in terms of climate change.



thinkchange

www.climatechange.gov.au

Cairns Regional Council

While a small part of the council's overall work on adaptation, Cairns Regional Council is undertaking a program of sand replenishment and working to make sure that land use and regional infrastructure planning explicitly recognise future climate risk.

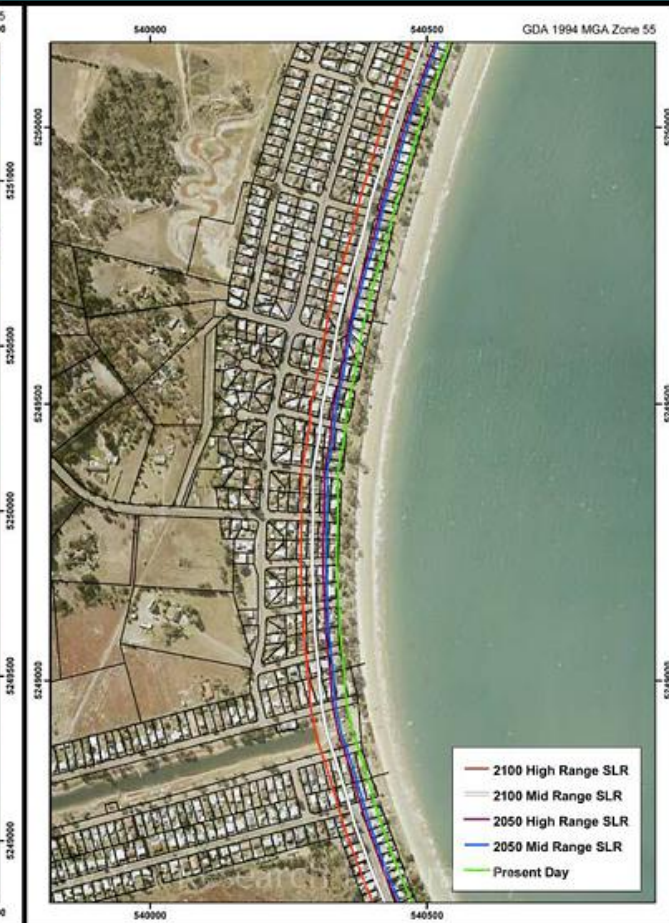
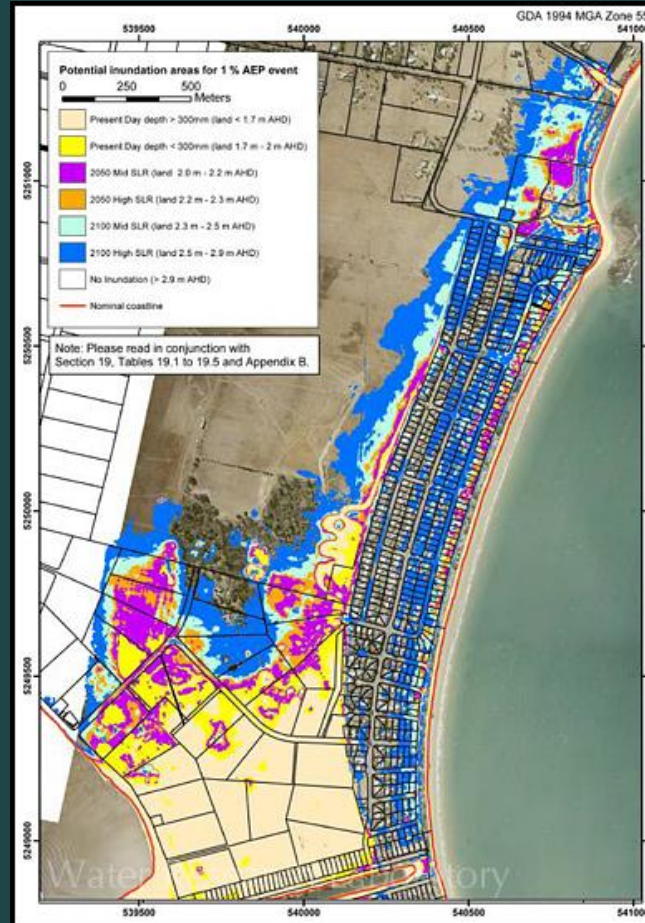


thinkchange

www.climatechange.gov.au

Clarence City Council

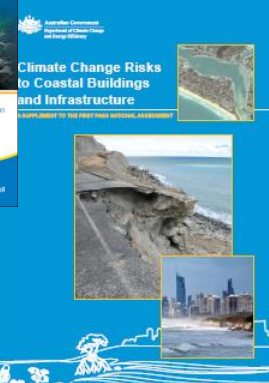
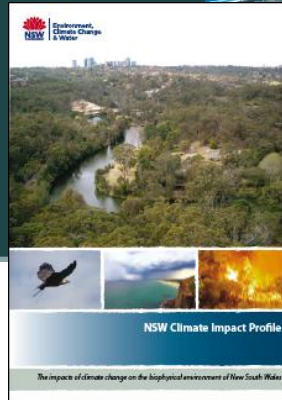
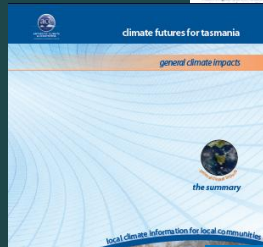
Clarence City Council actively engaged with its community in communicating risk and in developing its strategic adaptation plan. Residents at risk supported changes to planning regulation, which put a stop to future development in areas at risk of inundation from sea level rise and storm surge.



thinkchange

www.climatechange.gov.au

Climate change : a national challenge

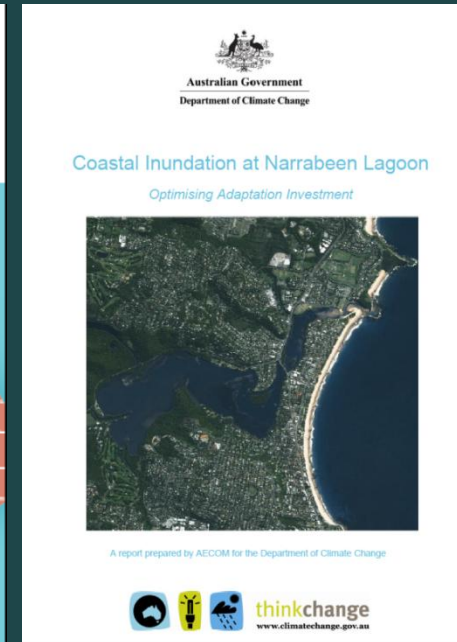
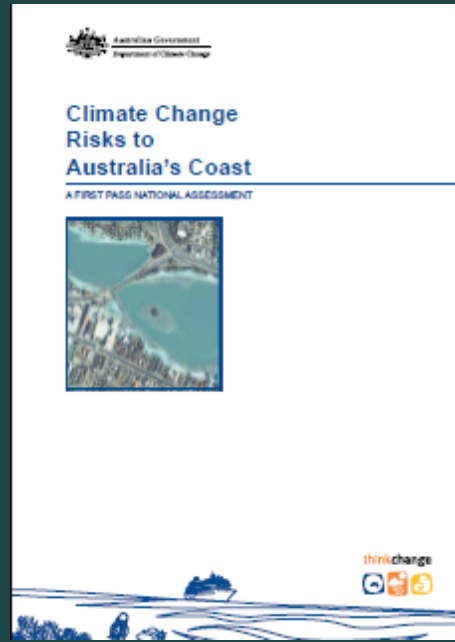
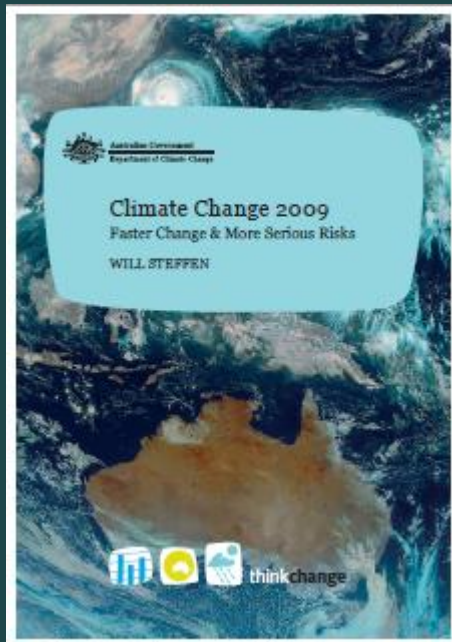


NATIONAL PARTNERSHIP AGREEMENT FOR NATURAL DISASTER RECONSTRUCTION AND RECOVERY



thinkchange
www.climatechange.gov.au

Department of Climate Change and Energy Efficiency



Key Messages

- Climate change is real and happening.
- Local Government is at the pointy end of dealing with many impacts.
- Managing climate impacts is a shared responsibility across all levels of government, business and community.
- Planning for and responding to climate change is complex – useful to share learning.
- The Australian Government will continue to support local government action on climate change.

