



WHEATBELT SECONDARY FREIGHT ROUTES

Cr Ricky Storer
Chairperson - Wheatbelt North
Regional Road Group

WHEATBELT SECONDARY FREIGHT ROUTES

- ▣ Local Government Roads
 - ▣ 4,266km across 42 LGAs
 - ▣ Regional Distributor
 - ▣ Interconnect across Local Governments
- ▣ Connect Regional Freight Hubs
 - ▣ Link to State and National Roads
 - ▣ Ports
 - ▣ CBH Receival Points
- ▣ Restricted Access Vehicles
 - ▣ Streamlined regional freight routes
 - ▣ RAV Network continuity



Wheatbelt Region – Snap Shot

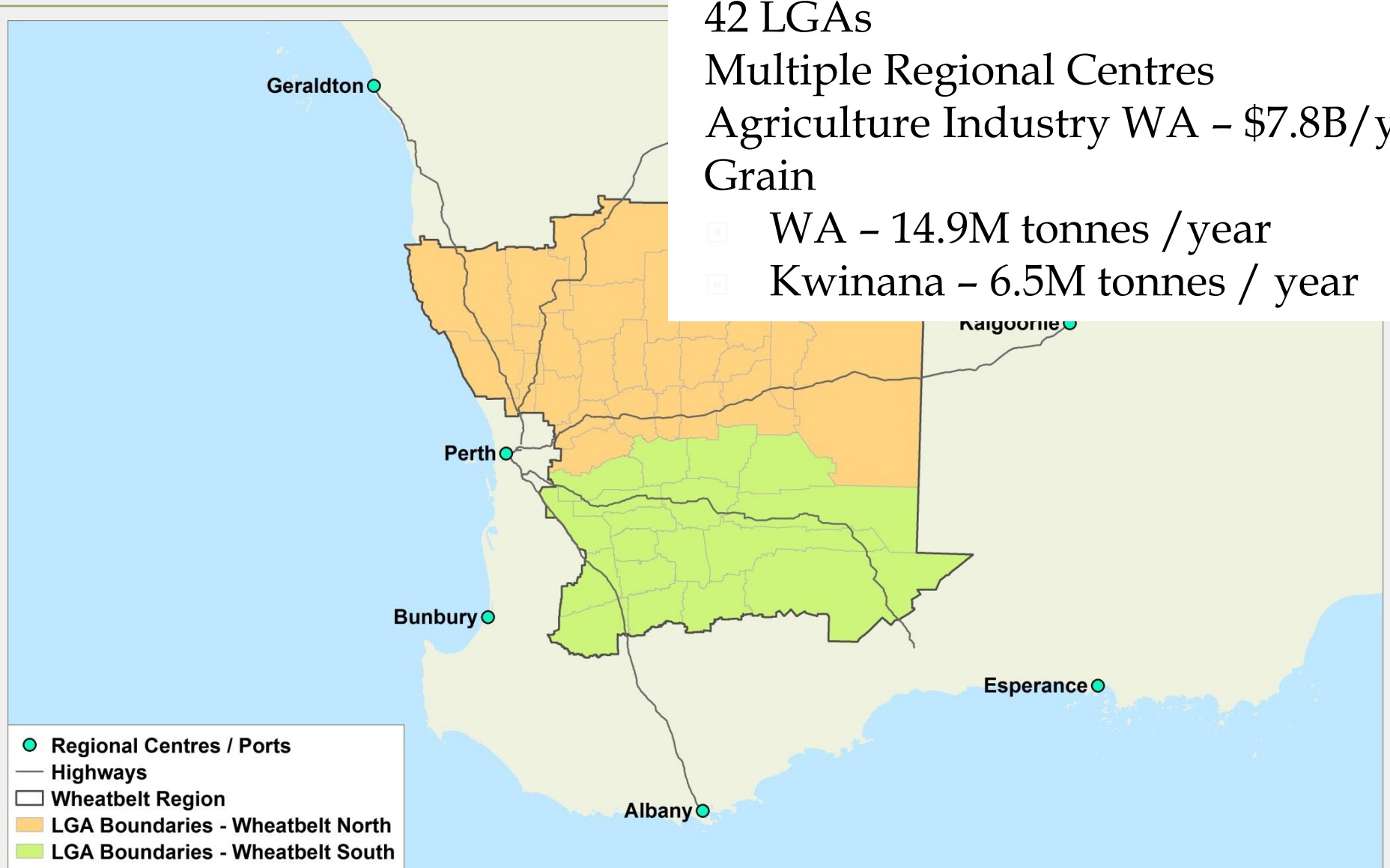
42 LGAs

Multiple Regional Centres

Agriculture Industry WA – \$7.8B/yr
Grain

WA – 14.9M tonnes / year

Kwinana – 6.5M tonnes / year



Wheatbelt - Historical Transport



Wheatbelt – Contemporary Freight Routes

Lime Sand

2013 >1M tonnes / year

Estimated 2.5M T / Yr

Frei Tier 3 Railway
585km Removed
km

Regional Stock Saleyards



PROCESS SO FAR

- ▣ 2016 Workshops
 - 42 LGAs
 - Identified routes
- ▣ November 2016 – National Local Roads Congress
 - Regional Project
 - Regional Benefit
- ▣ 2017 – Working Group
 - Governance Structure
 - Data Collection
 - Funding Options
- ▣ Minimum Design Criteria
 - 7m seal width
 - Adequate road base (nominal depth 250mm)



WORKING GROUP

The background of the slide features a map of a region, likely in the United Kingdom, with a yellow highlighted area. The map shows a network of blue lines representing roads or rivers, and the highlighted area covers a significant portion of the central and southern parts of the region.

- ❑ Local Government Driven
- ❑ Regional Road Groups – Governance Structure
- ❑ Framework – Technical Basis
- ❑ Stakeholders – Consultation / Engagement

DATA ASSESSMENT

DATA	QUANTITY
Number of Shires	42
Length of Road	4,266km
Major Issues	<ul style="list-style-type: none">▪ Narrow Seal▪ Inadequate Pavement▪ Roadside Vegetation▪ Intersection Design
Proposed Solution	<ul style="list-style-type: none">▪ Widen to Minimum Standards▪ Adequate Pavement▪ Drainage▪ Vegetation Management
Indicative Cost	\$???,???,???

NEXT STEPS

1. Finalise Data Collection
2. Business Case
3. Project Development
4. Project Delivery



OUTCOMES

- ❑ **Interconnected Network**
- ❑ **Regional Economic Benefit**
- ❑ **Improved Road Safety on Local Government roads**